

Ideas for Saint's Costumes

***If your saint was a priest or a nun, try wearing all black!**

***If your saint lived long ago, they probably wore long tunics. You could wear a bathrobe.**

***Sheets or towels work great for the head, or draped around the shoulders.**

***You can find out what your saint's symbol is and carry it—for example, St. Therese loved flowers!**

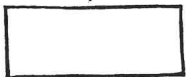
***Below are some simple patterns if you like to sew!**



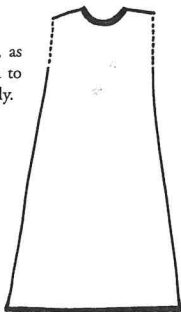
Directions for Sewing a Tunic

1. Sleeves

Cut two rectangles for arms, as big as an arm and wide enough to go around the arm twice, loosely.



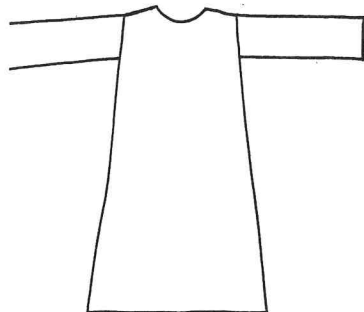
B.) Fold the rectangles in half lengthwise and sew together, leaving ends open.



2. Body

A.) Cut two shapes, like the one shown at left, for the body. This is the body of the tunic.

B.) Pin right sides together. Sew the two shapes, leaving arm holes (dotted lines), neck hole, and bottom hem free.



3. Tunic

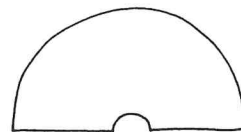
Keep the tunic inside out. Turn the sleeves inside out and put them inside the tunic body. Pin in the shoulder end of the sleeves to the tunic's armholes. Sew together, and be sure to close the opening for the arms.

Optional Method: Sew the sleeves on at the shoulders before sewing up the side seams. Then you can fold the tunic in half (right sides together) and make one long underarm seam from edge of the sleeve to the floor edge of the body.



Cape

To make a simple cape, cut material in a half-circle (at right) and pin or snap cape together at neck. Hood may be added for peasants, monks, and pilgrim saints. If you are planning to incorporate this into many different saint costumes, make the cape long enough to reach the ankles, so that it can be used either as a mantle for Religious or cape for lay saints.



Optional Method: Fold over the top edge of a large, square piece of material and stitch a gather. Thread a string through the fold for the tie.



Additional Costume Ideas

Many items such as jewelry, hats, shoes, and sheets or yardage for robes can be found at thrift stores.

Elderly saints: Lightly sprinkle and spread cornstarch in hair to make it gray or white.

Priests: Black tunic (buttons can be added down the front). Collars can be made from a paper plate or a bleach bottle (for durability). For bishops, add a red sash and a miter—use a decorated paper plate or a bleach bottle (for durability). For Popes, use a white tunic for a cassock (buttons may be added down the front). Add a white cape, pectoral cross, miter, and a ring.

Royalty: Decorate a paper crown. Decorate plain tunics with jewelry and sequins.

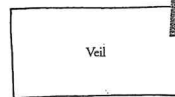
Soldiers: Armor and swords can be cut out of cardboard and covered with tinfoil.



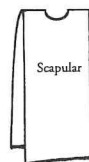
Religious Habit

Many saints were Religious, and making their costumes is a very simple task. Use the basic tunic pattern on page 211 and add the items below as needed.

Veil: Color will depend upon the particular Religious order to which the saint belonged. Lay veil over head, and pin it to guimpe if desired. *Tip:* Use a very large piece of material so it will fit all sizes; fold it in half for small children.



Guimpe (pronounced "gimp"): This is the piece of white material that wraps the face and neck of women Religious. A large white turtleneck works well for this piece. Fit face into the neck of the turtleneck; then pin the shirt together behind the head to keep the sleeves from falling forward. Bring some of the shirt forward to make the "bib," which can either go over or under the scapular, depending on the saint's habit.



Scapular: This is simply a long piece of material with a hole cut in the middle for the head. Not all Religious habits feature a scapular, and the color depends upon the religious order (Dominicans—white, Carmelites—brown). *Tip:* The scapular can double as a simple tunic (no sewing) for less elaborate costumes, such as Saint Juan Diego's tilma (attach a picture of Our Lady of Guadalupe to the front), and for use in plays in which quick costume changes are needed.

Belt: A cord, black or brown belt, or knotted cord can be added, depending on the particular order's habit. Hang rosary on belt.

